

Flexible

Private Label

Label

Agility Consulting

in Partnership with

Pan[®]
A TALX Company

Brand

Fast

Customized

ASSESSMENT AGILITY

Private

Your Organization's

Capability

BRAND

Assessments

Focused

Private Label Assessment Administration, Management and Trend Analysis

Why Consider a Customized Private Label Platform?

- Do you know who is using assessments in your organization or which assessments they are using?
- How do these assessments support your Human Capital strategy?
- Are these assessments being administered according to professional standards?
- Communicates your brand to all employees completing any of the assessments offered by you or consultants you have hired to deliver a training program, personnel selection testing, assessments used by internal/external executive coaches, assessments completed in conjunction with a leadership development program, etc.
- Provides a management system for administering all online assessments
- Ensures consistency in the administration of human resource assessment
- Enables you to analyze data across the organization to identify trends and important areas of focus

*pan Continually Evaluates New Assessments and
Selects the "Best of Breed" for Inclusion in Our
Online Catalog*



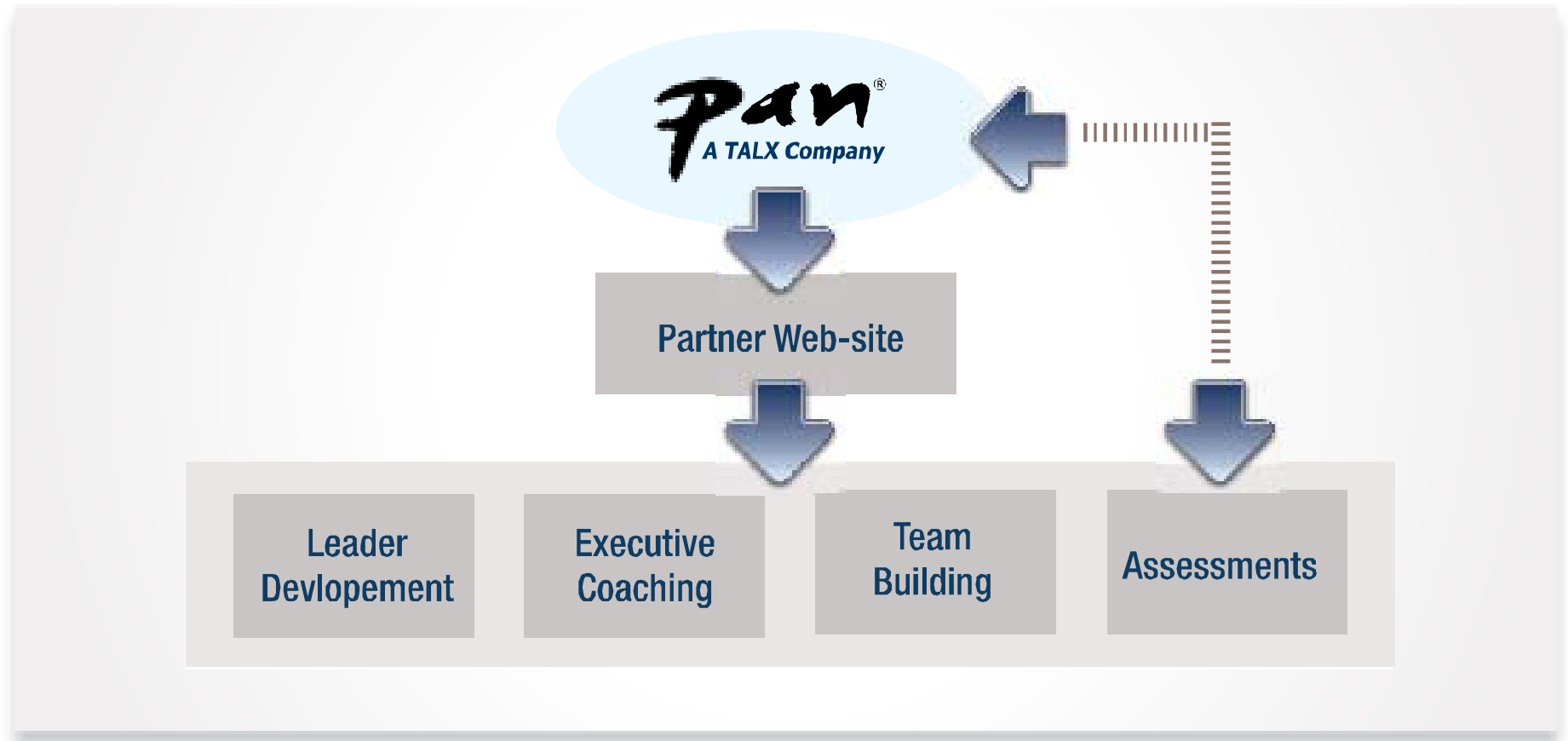
pan Assessments

- 200+ Titles from Nearly 50 Publishers
- Largest Aggregation of Online Test Content in Industry
- Full E-Commerce Capabilities and Ordering
- Free Access to Technical Materials and Sample Reports
- "Content Neutral" Approach to Assessment Selection

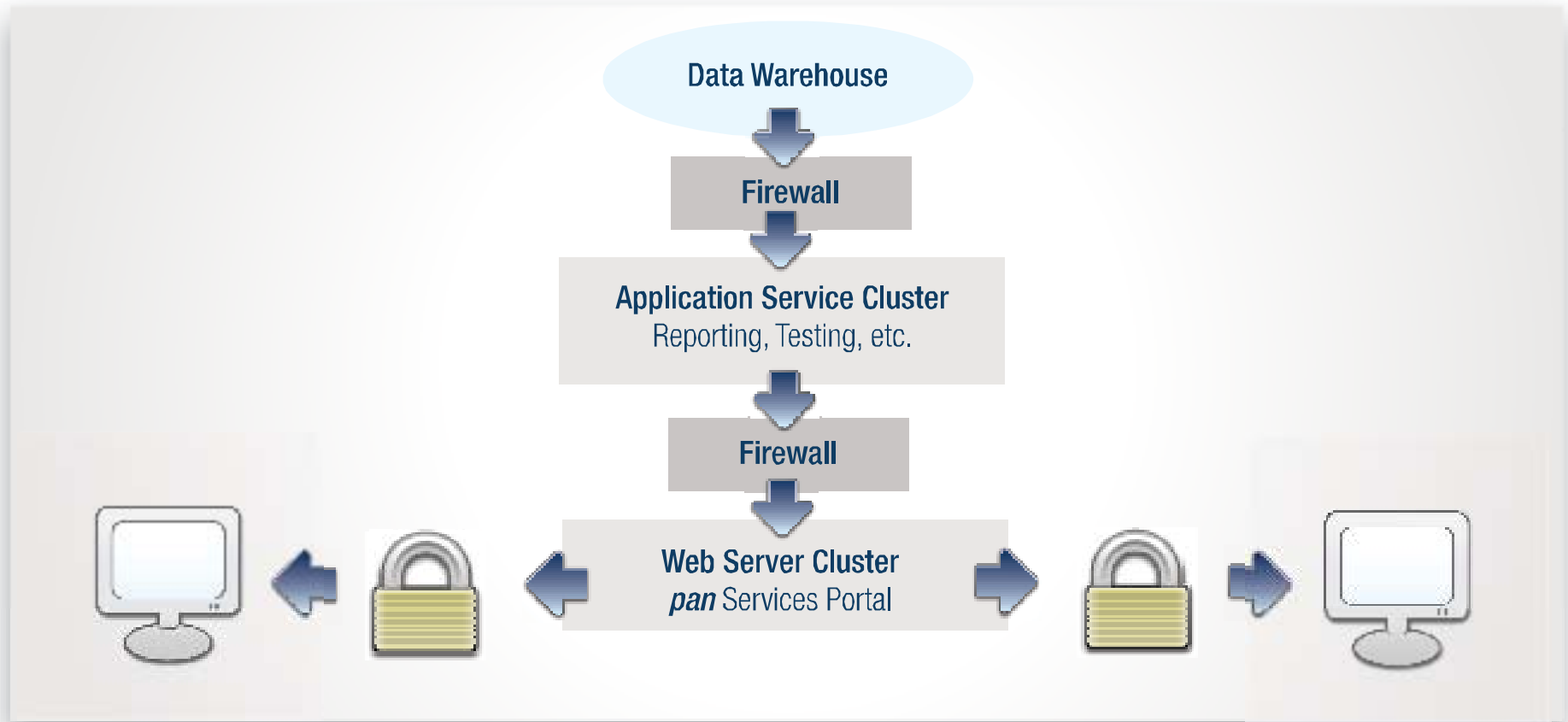
Sampling of Assessment Content Partners



Your Web-Site Includes Your Private Label, Powered By pan



pan's Secure Technology Platform



Setting Up A Private Label (PL)

Setting-up is fast and easy...

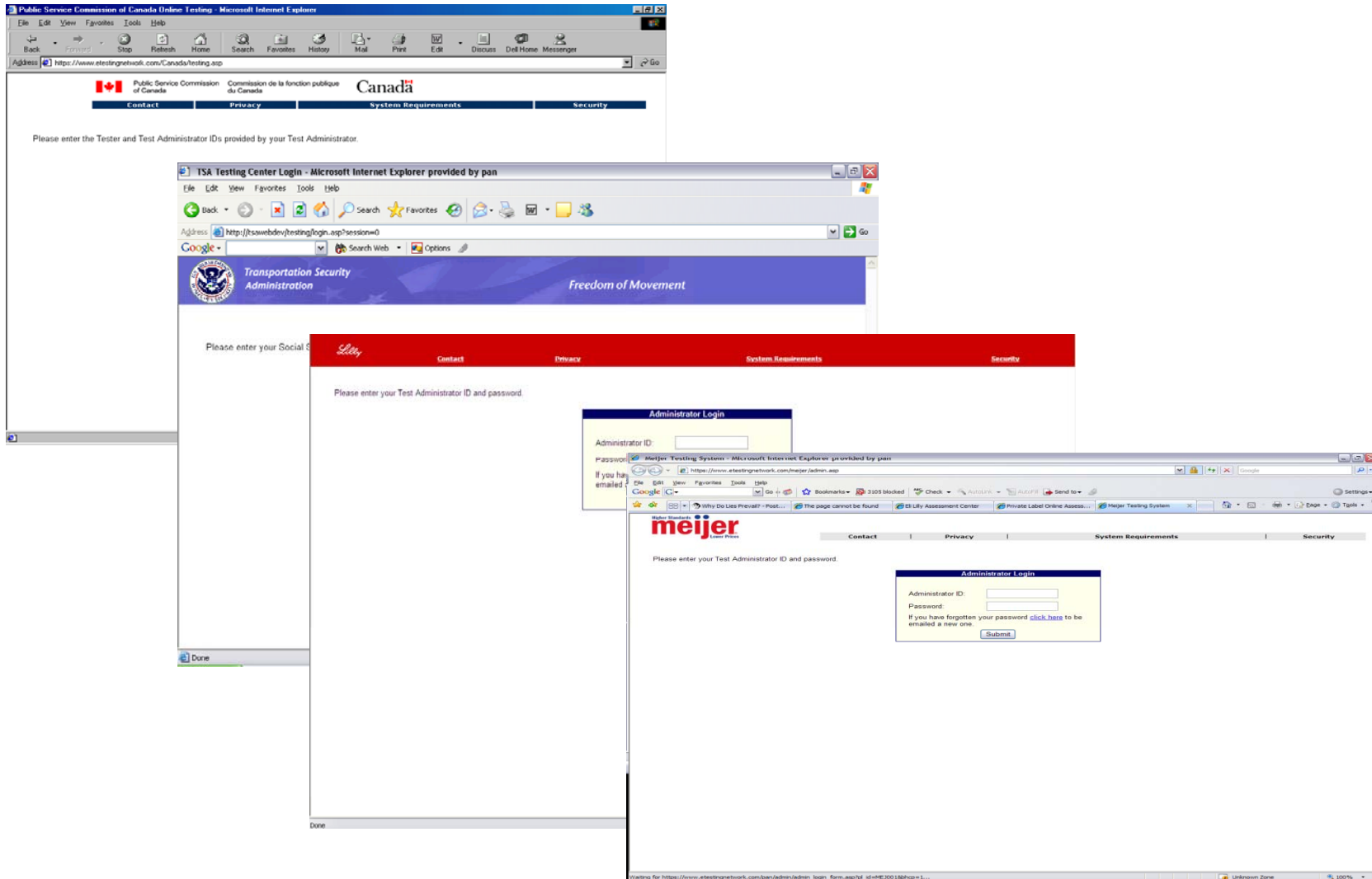
We collaborate with you in designing the look of the PL and in selecting the desired features including the "dashboard" controls through which the PL is managed

We prepare a "draft" PL for review with you and incorporates any refinements

We activate the PL and walk you through its operation

The entire process takes a day or two with your contribution of a couple of hours for customization

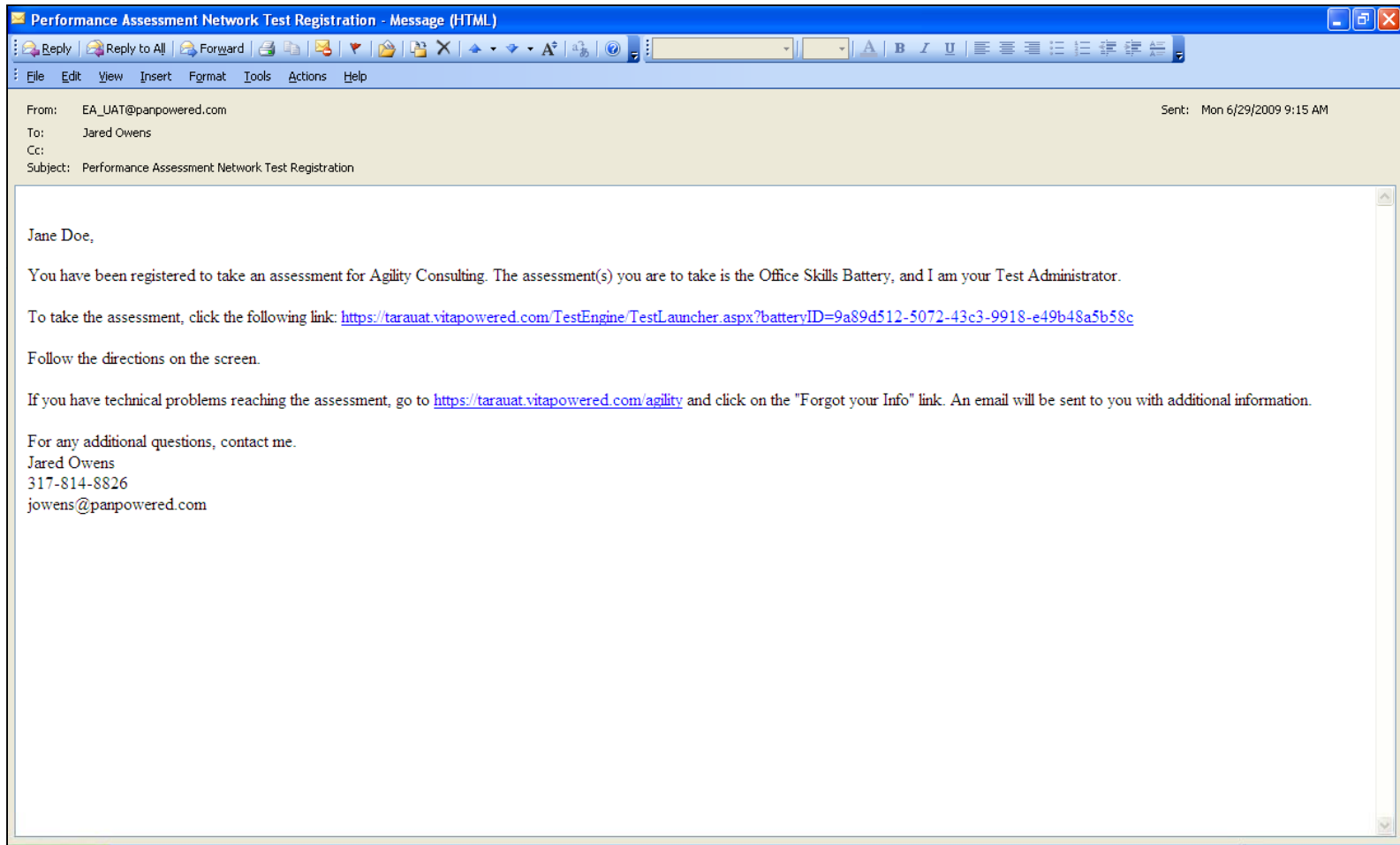
Illustration -- Private Label Portals



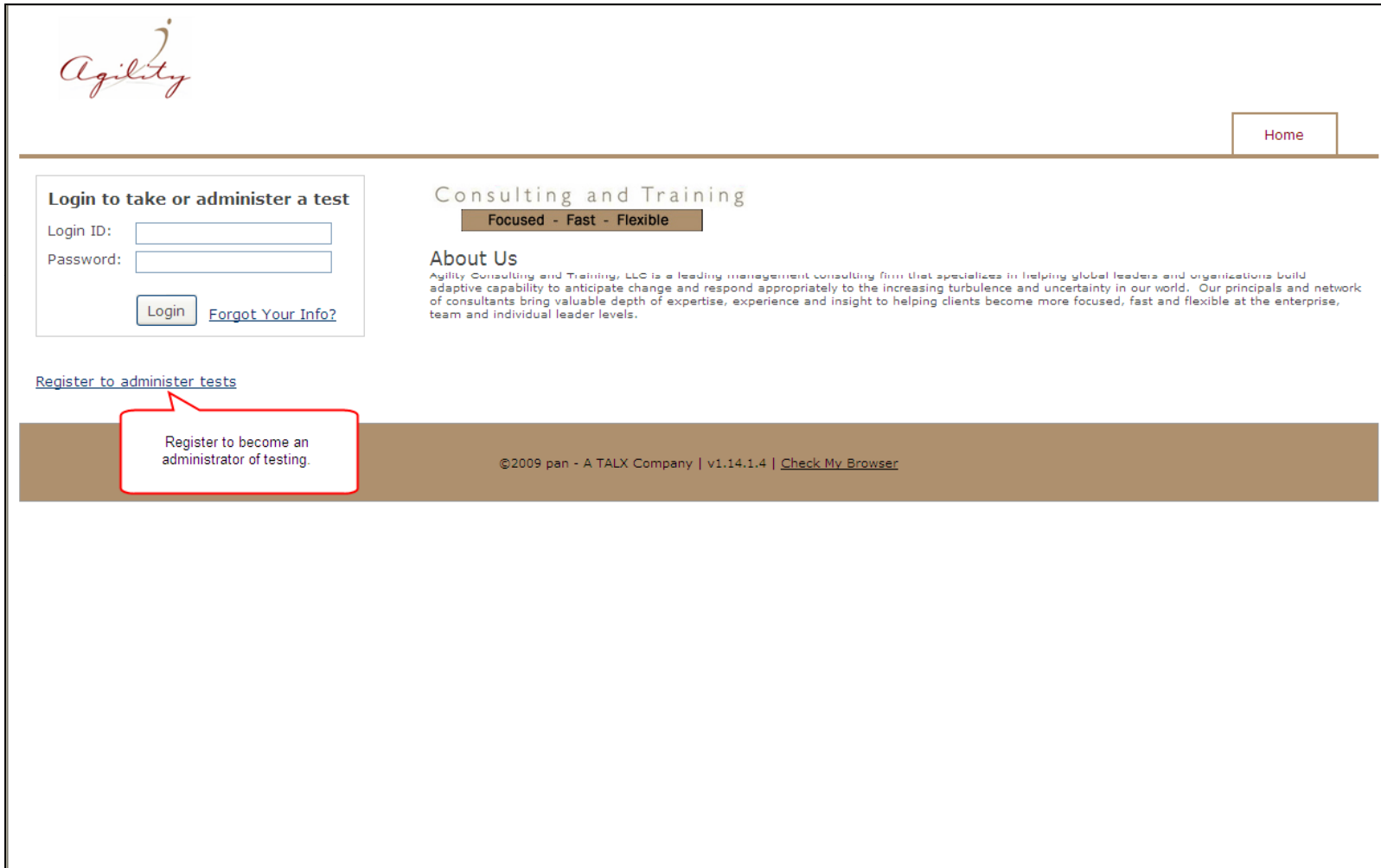
Private Label Dashboard Makes Managing Assessment Process Easy

- Check on participant status
- Manage your inventory
- Add or delete assessments from your catalog
- Manage billing
- Development activity reports
- Change settings

Automated Email with Instructions to Person Completing Assessments

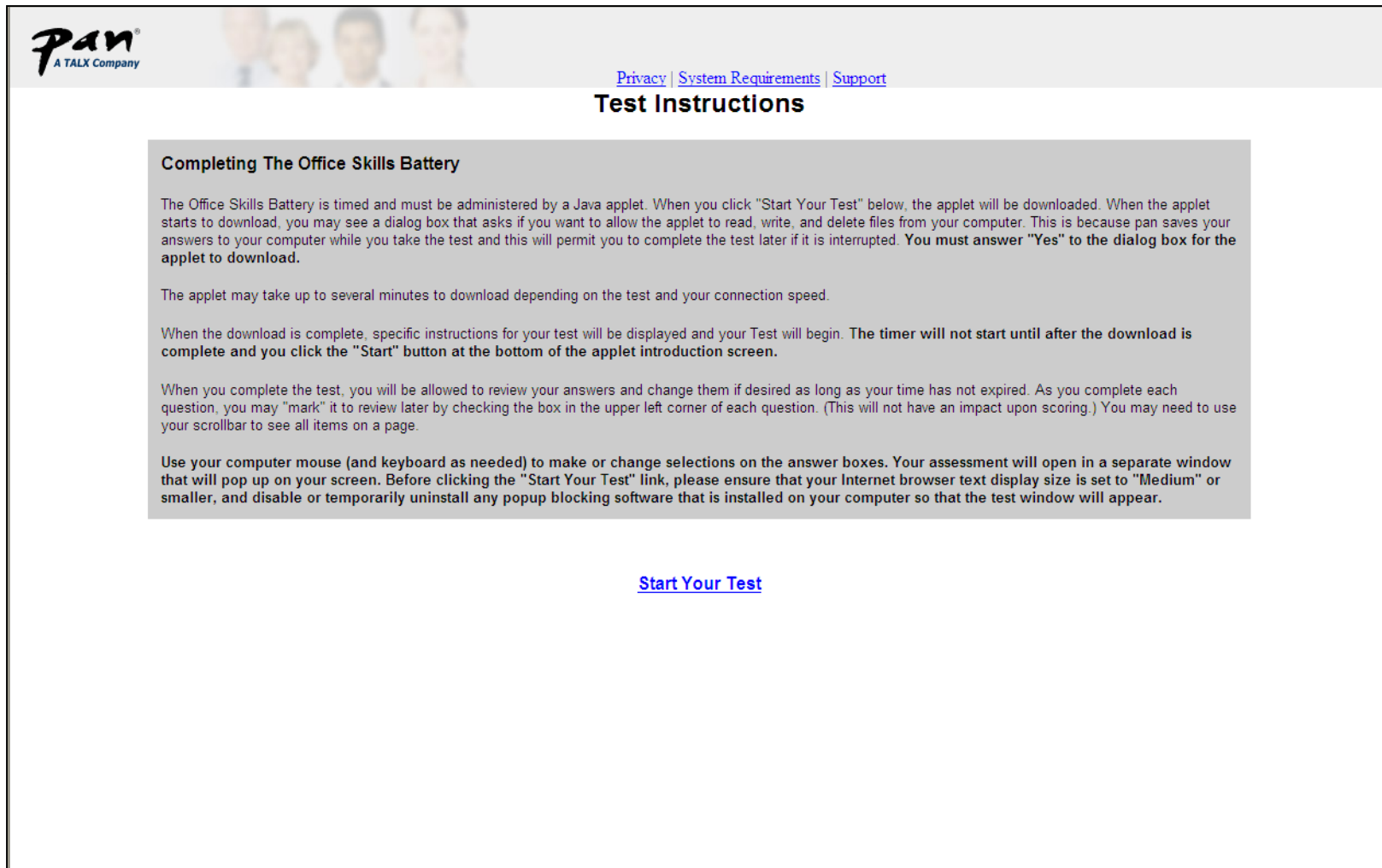


Person Completing the Assessments - Log In



The screenshot shows the Agility website's login page. At the top left is the Agility logo. At the top right is a 'Home' button. Below the logo is a login form titled 'Login to take or administer a test' with fields for 'Login ID:' and 'Password:', a 'Login' button, and a 'Forgot Your Info?' link. To the right of the login form is a 'Consulting and Training' section with the tagline 'Focused - Fast - Flexible' and an 'About Us' section. Below the login form is a link 'Register to administer tests'. A red callout box points to this link with the text 'Register to become an administrator of testing.' At the bottom of the page is a footer with copyright information: '©2009 pan - A TALX Company | v1.14.1.4 | Check My Browser'.

Online Assessment Instructions



pan
A TALX Company

[Privacy](#) | [System Requirements](#) | [Support](#)

Test Instructions

Completing The Office Skills Battery

The Office Skills Battery is timed and must be administered by a Java applet. When you click "Start Your Test" below, the applet will be downloaded. When the applet starts to download, you may see a dialog box that asks if you want to allow the applet to read, write, and delete files from your computer. This is because pan saves your answers to your computer while you take the test and this will permit you to complete the test later if it is interrupted. **You must answer "Yes" to the dialog box for the applet to download.**

The applet may take up to several minutes to download depending on the test and your connection speed.


When the download is complete, specific instructions for your test will be displayed and your Test will begin. **The timer will not start until after the download is complete and you click the "Start" button at the bottom of the applet introduction screen.**

When you complete the test, you will be allowed to review your answers and change them if desired as long as your time has not expired. As you complete each question, you may "mark" it to review later by checking the box in the upper left corner of each question. (This will not have an impact upon scoring.) You may need to use your scrollbar to see all items on a page.

Use your computer mouse (and keyboard as needed) to make or change selections on the answer boxes. Your assessment will open in a separate window that will pop up on your screen. Before clicking the "Start Your Test" link, please ensure that your Internet browser text display size is set to "Medium" or smaller, and disable or temporarily uninstall any popup blocking software that is installed on your computer so that the test window will appear.

[Start Your Test](#)

Status of Assessments Assigned to the Participant



Hello Jared Owens ([log out](#))

Agility Consulting - [Switch Client](#)

Home
Catalog
Inventory
Reporting
Settings

Results

- [Dashboard](#)
- [Active Assessments](#)
- [Archived Assessments](#)
- [Product Status](#)

Administer

- [Assignment](#)
- [Custom URL](#)

Users

- [Upload Candidates](#)
- [Approve Administrators](#)

Assessment Settings

- [Demographics](#)

Assessment Results

This page displays a history of assessments taken by your candidates.
Double-click any row to see in-depth score information for that particular assessment.

Search
[Reset Search](#)

	Time Completed	Last Name	First Name	Time Taken (secs)	Assessment	
View Report	6/29/2009 8:24:47 AM	Doe	Jane	0	Office Skills Battery	Archive

© 2009 pan - A TALX Company | v1.14.1.4 | [Contact Us](#) | [Check My Browser](#)

Sample Pages from Two Different Assessment Reports

Hogan Personality Inventory

HOGAN LEAD CHALLENGE

BOLD

Concerns having inflated views of one's competency and worth.

Trait	Score
EXCITABLE	88
SKEPTICAL	73
CAUTIOUS	74
RESERVED	21
LEISURELY	19
BOLD	63
MISCHIEVOUS	46
COLORFUL	85
IMAGINATIVE	29
DILIGENT	63
OUTRIL	76

BEHAVIORAL IMPLICATIONS

You scored in the LOW RISK ZONE on this scale. Leaders with similar scores:

- Seem confident in their abilities.
- Have a realistic view of their competencies.
- Have reasonable career goals.
- Seem willing to listen to negative feedback.

LEADERSHIP IMPLICATIONS

You seem to be an appropriately confident person who makes reasonable demands on staff and subordinates. You will participate in team tasks without demanding leadership positions. In the process of managing your career, your easy going style may cause you to hold back unnecessarily. You may not actively promote a vision or strategy for the organization, preferring to wait until others ask for your opinion. You have no leadership development issues in this area.

COMPETENCY ANALYSIS

- **SEEING PERSPECTIVE** : Although you have ideas about how to expand and improve the business, you may not push them aggressively.
- **PERSONAL DEVELOPMENT** : You will listen to feedback and ask others (peers, stakeholders, etc.) to evaluate your performance. Your openness will facilitate your development.
- **DRIVE FOR RESULTS** : Your natural modesty may cause you to underestimate your capacity and to set your aspiration level too low.

Leadership Agility Profile

Leadership Agility Profile™ Summary Results

This is your summary chart for the LEADERSHIP AGILITY PROFILE™. You can view how you rated your self compared to how your team rated you in each of the key leadership agility behaviors. You can identify the areas requiring the most immediate attention as well as those areas where you have demonstrated strengths. Successful leaders are able to build from their strengths and find sustainable ways to improve where needed. In the space below, list your development priorities and some ideas for how you might improve during the next several months. Identify someone who can provide you ideas and feedback as you begin to work on these areas. We grow and change only when we decide it is important and when someone helps us stay on track!

J. Sample						Total Score		
Five Key Drivers of Leadership Agility						SELF	ALL	
Anticipating Change	Visioneering		Sensing		Monitoring		3.9	3.2
	4.4	3.5	3.8	3.2	3.4	2.7		
Generating Confidence	Connecting		Aligning		Engaging		4.6	3.6
	4.8	3.6	4.6	3.6	4.4	3.6		
Initiating Action	Bias for Action		Decision Making		Collaborating		4.5	3.5
	4.6	3.6	4.6	3.3	4.4	3.5		
Liberating Thinking	Bias for Innovation		Customer Focus		Idea Diversity		4.4	3.5
	4.6	3.1	4.2	3.7	4.4	3.7		
Evaluating Results	Creating Expectations		Real Time Feedback		Fact-Based Measures		3.9	3.4
	3.8	3.4	4.0	3.5	4.0	3.2		
Overall Leadership Agility Index™						4.3	3.4	
Personal Development Plan Priorities								

"Driving" Your Private Label Using Your Dashboard

Hewitt

Hello Little Denison ([log out](#))

Pan - [Switch Client](#)

Home

Catalog

Inventory

Billing

Authoring

Reporting

Settings

Results

- [Dashboard](#)
- [Active Assessments](#)
- [Archived Assessments](#)
- [Product Status](#)

Administer

- [Assignment](#)
- [Custom URL](#)

Users

- [Upload Candidates](#)
- [Approve Administrators](#)

Assessment Settings

- [Demographics](#)

Administrator Dashboard

[View a video about us](#)

[Sample our test platform](#)

News and Messages

New Content: WPQ/emotional intelligence (WPQ/ei) w/report - 06/24/2009
 New content 'WPQ/emotional intelligence (WPQ/ei) w/report' has been added to the catalog and is available for purchase.

New Content: Cognitive Aptitude Test w/report - 06/22/2009
 New content 'Cognitive Aptitude Test w/report' has been added to the catalog and is available for purchase.

New Sales Offer: CLH001 - 06/22/2009
 A new Sales Offer 'CLH001' is available.

New Sales Offer: test rel14 - 06/22/2009
 A new Sales Offer 'test rel14' is available.

New Content: Office Skills Battery - 06/18/2009
 New content 'Office Skills Battery' has been added to the catalog and is available for purchase.

New Content: Office Skills Battery - 06/18/2009

Name	Qty
Cognitive Aptitude Test w/report	2
Watson-Glaser Critical Thinking Appraisal - Short	5
WPQ/emotional intelligence (WPQ/ei) w/report	2

Recent Product Activity

Previous 30 days

Product	Assigned	Completed
Cognitive Aptitude Test w/report	2	2
Pantest QA	1	1
Watson:Glaser Critical Thinking Appraisal : Short	1	1
WPQ/emotional intelligence (WPQ/ei) w/report	2	2

Clients Using pan Online Assessment



For More Information Contact

Nick Horney, Ph.D.

Principal - Agility Consulting

Ph 336-286-7250

Cell 336-558-5273

nickhorney@agilityconsulting.com